



BRIGADE
serenity

BYPASS ROAD, CHIKMAGALUR



*For a better quality of life,
upgrade to Brigade*

As the mist rises from the slopes of Chikmagalur,
a refreshing whiff of Arabica coffee wakes you up
as you begin a fresh day. The first rays of dawn
filter through the windows, stirring a conversation
about life in your new home, in coffee paradise.

BRIGADE
serenity
BYPASS ROAD, CHIKMAGALUR



Serene hills, lush valleys, endless coffee plantations that only meandering streams divide. Welcome to Chikmagalur. Living here amidst such pristine beauty can be a blissful dream. An unforgettable moment when the crisp, cool breeze mingles with the warmth of your home at Brigade Serenity. Grab a cup of hot coffee, and let the conversations begin.

60 units | 2 & 3-bedroom luxury apartments | 1320 sq.ft. - 2200 sq.ft.

morning

conversations



“
*where’s that bird this morning?
must be busy somewhere*

*busy? nobody is busy here.
what about the bees? I’m sure they’re busy.*

*do you realise something?
what?*

*it’s such a quiet morning,
and we’re the only ones here talking!*

”

At the break of dawn, open your gateway to nature. Let the misty mountains in the distance captivate your senses while you recline in your cane chair, relishing the fragrance of freshness that wafts into the balcony. Break the silence of the morning with a soft conversation or two. Here, time stands still, and it will seem forever before first rays of dawn find their way into your abode of tranquility.

refreshing

conversations



“

*what's for lunch?
you just had breakfast*

*yeah, but that long walk
has made me hungry again
so what do you want for lunch?*

*i want something as fresh as
the view outside
then, how about some fresh salad*

perfect...

”

A thing of beauty is a joy for ever.

The alluring landscape of Chikmagalur is a refreshing reminder that life can be truly beautiful. The experience of luxury at Brigade Serenity is the first step to realising the beauty of life. Escape the stress of the city and rediscover the real flavour of a wonderful lifestyle. Here, the air brings with it a renewed zest for life, in which even the simplest of everyday conversations is a moment to remember.

open air

conversations



“

*shhh...did you hear that whistle?
yeah...i heard it*

*i think it's that bird on
that second branch
the one sitting on the left or the right?*

*the one sitting on the left
how are you so sure?*

*i saw it moving its beak
look look it's moving its beak again!*

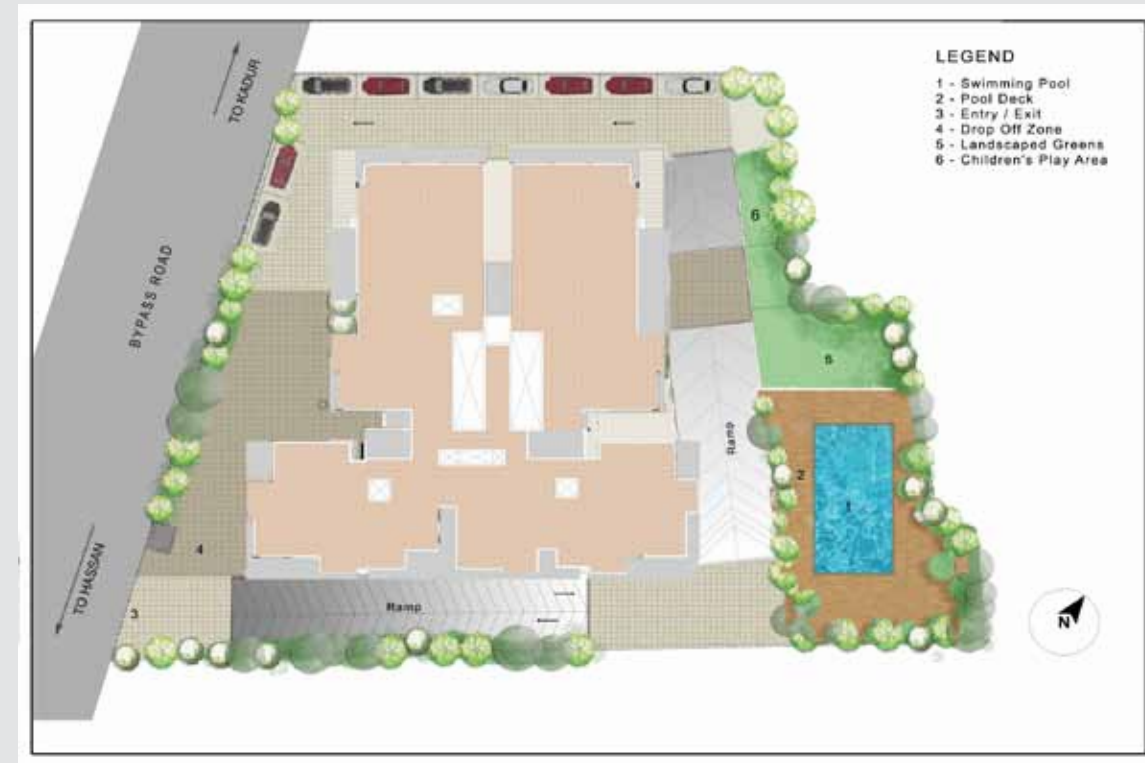
”

You're in the lap of nature,

in this scenic town that's almost picture perfect. However, you're not too far away from the comforts of modern living. If you're not in the mood to go for a walk down the winding roads and breathe in air of unadulterated calm, then step into the gym or dive into the pool. It's the perfect recipe for health and wellness.

Gymnasium | Swimming Pool | Landscaped Greens | Party Area

location map



master plan

specifications

FLOORING

COMMON AREAS:

- > Lift lobby / Corridors: Green marble / Vitrified tile flooring
- > Staircase: Marble / Kota stone

APARTMENT:

- > Living / Dining / Foyer: Vitrified tiles
- > Bedrooms / Kitchen: Vitrified tiles
- > Balcony / Utility: Anti-skid ceramic tiles
- > Bathrooms: Anti-skid ceramic tiles
- > Dado: Glazed tiles up to 7' 0" high

DOORS & WINDOWS

- > Apartment entrance door: Teak wood frame with designer door shutter
- > Bedroom doors: Hardwood frame with flush door shutter
- > Windows & ventilators: UPVC / Anodized aluminium windows with sliding shutters and mosquito mesh with safety grills

KITCHEN

- > Black granite kitchen counter with stainless steel sink
- > Dado: Glazed tiles 2" above platform

BATHROOMS

- > CP fittings: Jaquar or an equivalent brand
- > Sanitary fixtures: Hindustan / Parryware or an equivalent brand

PAINTING

- > Exterior finish: Long lasting texture paint
- > Internal walls: Plastic emulsion
- > Ceilings: Oil bound distemper
- > Steel and wood works: Synthetic enamel paint

ELECTRICAL

- > Concealed PVC conduit with copper wiring - Finolex or equivalent
- > Modular switch - Anchor Roma or an equivalent brand

POWER

- > 6 kW for a 3-bedroom unit
- > 4 kW for a 2-bedroom unit
- > 3 kW for a 1-bedroom unit

STANDBY POWER FOR APARTMENTS

- > 50% of total power supply
- > 3 kW for 3-bedroom unit
- > 2 kW for 2-bedroom unit
- > 1.5 kW for 1-bedroom unit

LIFTS

- > 1 passenger & 1 service lift

OTHER AMENITIES

- > Gymnasium, swimming pool and party area
- > Well-designed landscaped areas for recreation and children's play area
- > Car-parking at basement level and stilt level on ownership basis only
- > Fire protection system as per Karnataka Fire Force Standards
- > Cable TV, Internet and Intercom facility
- > Borewell with pump and sump





*For a better quality of life,
upgrade to Brigade*

Brigade Group commenced operations in 1986, and over the last 2 decades, has evolved into a brand that is synonymous with Innovation, Quality, Trust and Customer Satisfaction.

Headquartered in Bangalore, Brigade Group has a network of offices across south India, an office in Dubai, and is represented in the USA by an accredited agent, Legion Real Estate. Brigade Group's portfolio includes residential, offices, retail, hospitality and education.

With over 20 million square feet of developed real estate, across 100 projects, Brigade has emerged as one among India's leading property developers, and is consistently setting new benchmarks in the real estate industry.

OUR CORE VALUES

Quality	Fair
Customer	Innovative
	Responsible
	Socially
	Trustworthy

Multiple domains. **Single-minded commitment.**



An award-winning brand, Brigade Group has developed premium residences, luxury apartments, office buildings, software parks, malls, clubs, spas, hotels, serviced residences and SEZs.

Brigade Group was conferred the **'Platinum Award of Excellence'** by Construction World in 2012, for being consistently recognized as India's Top Ten Builders for 5 consecutive years (2007 - 2011)

World Trade Center Bangalore
"The Best Commercial Space of the Year"
- CREDAI Real Estate Awards 2012

Brigade Gateway
"The Best Theme Based Township of the Year"
- CREDAI Real Estate Awards 2012

"Developer of the Year - Commercial in South India" - 2012
- Realty Plus

Brigade Gateway
"Integrated Township of the Year in South India" 2012
- Realty Plus

Forbes "200 Best Under a Billion Dollar"
List of 2008 for Asia Pacific

Commendation Certificate for Business Excellence
- The Indian Merchants' Chamber
Ramakrishna Bajaj National Quality Award Trust (RBNQA)

awards



The information herein, i.e. specifications, designs, dimensions, illustrations etc. are subject to change without notifications, as may be required by the relevant authorities or the Developer's Architect and cannot form part of an offer or contract. Whilst every care is being taken in providing this information, the developers, and managers cannot be held liable for variations. All illustrations are artist's impressions only and do not form part of the standard offering. The plans & specifications are subject to variations, modifications and substitutions as may be recommended by the company's Architect and / or relevant approving authorities. E&OE.



*For a better quality of life,
upgrade to Brigade*

Bangalore: Experience Centre @Ground Floor, World Trade Center, Brigade Gateway Campus, 26/1, Dr. Rajkumar Road, Malleswaram-Rajajinagar, Bangalore 560 055. Toll free no.: 1800 102 9977

Dubai: Brigade Enterprises Limited, P.O. Box No. 49191, 708, Atrium Center, Bank Street, Bur Dubai, Dubai.
Tel: +971 04-3555504 | Mobile: +971 50-1888604

U.S.A.: Legion Real Estate - Accredited Agent of Brigade Group, 883 Santa Cruz Avenue, Suite 200, Menlo Park, CA 94025. Tel: +1(650) 494 4975